

Multi Degrees of Freedom Systems

MDOF's

Giacomo Boffi

Dipartimento di Ingegneria Strutturale, Politecnico di Milano

May 4, 2012

Generalized SDOF's

Giacomo Boffi

Introductory Remarks

The Homogeneous Problem

Modal Analysis

Examples

Outline

Introductory Remarks

An Example

The Equation of Motion, a System of Linear Differential Equations

Matrices are Linear Operators

Properties of Structural Matrices

An example

The Homogeneous Problem

The Homogeneous Equation of Motion

Eigenvalues and Eigenvectors

Eigenvectors are Orthogonal

Modal Analysis

Eigenvectors are a base

EoM in Modal Coordinates

Initial Conditions

Examples

2 DOF System

Generalized SDOF's

Giacomo Boffi

Introductory Remarks

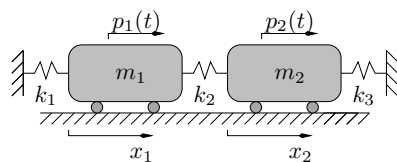
The Homogeneous Problem

Modal Analysis

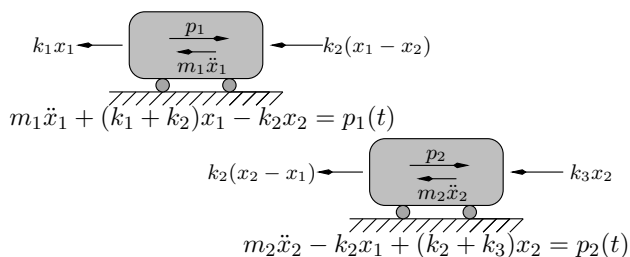
Examples

Introductory Remarks

Consider an undamped system with two masses and two degrees of freedom.



We can separate the two masses, single out the spring forces and, using the D'Alembert Principle, the inertial forces and, finally, write an equation of dynamic equilibrium for each mass.



Generalized SDOF's

Giacomo Boffi

Introductory Remarks

An Example
The Equation of Motion
Matrices are Linear Operators
Properties of Structural Matrices
An example

The Homogeneous Problem

Modal Analysis

Examples

The equation of motion of a 2DOF system	
<p>With some little rearrangement we have a system of two linear differential equations in two variables, $x_1(t)$ and $x_2(t)$:</p> $\begin{cases} m_1\ddot{x}_1 + (k_1 + k_2)x_1 - k_2x_2 = p_1(t), \\ m_2\ddot{x}_2 - k_2x_1 + (k_2 + k_3)x_2 = p_2(t). \end{cases}$	Generalized SDOF's
	Giacomo Boffi
	Introductory Remarks
	An Example
	The Equation of Motion
	Matrices are Linear Operators
	Properties of Structural Matrices
	An example
	The Homogeneous Problem
	Modal Analysis
Examples	

The equation of motion of a 2DOF system	
<p>Introducing the loading vector \mathbf{p}, the vector of inertial forces \mathbf{f}_I and the vector of elastic forces \mathbf{f}_S,</p> $\mathbf{p} = \begin{Bmatrix} p_1(t) \\ p_2(t) \end{Bmatrix}, \quad \mathbf{f}_I = \begin{Bmatrix} f_{I,1} \\ f_{I,2} \end{Bmatrix}, \quad \mathbf{f}_S = \begin{Bmatrix} f_{S,1} \\ f_{S,2} \end{Bmatrix}$ <p>we can write a vectorial equation of equilibrium:</p> $\mathbf{f}_I + \mathbf{f}_S = \mathbf{p}(t).$	Generalized SDOF's
	Giacomo Boffi
	Introductory Remarks
	An Example
	The Equation of Motion
	Matrices are Linear Operators
	Properties of Structural Matrices
	An example
	The Homogeneous Problem
	Modal Analysis
Examples	

$\mathbf{f}_S = \mathbf{K} \mathbf{x}$	
<p>It is possible to write the linear relationship between \mathbf{f}_S and the vector of displacements $\mathbf{x} = \{x_1, x_2\}^T$ in terms of a matrix product. In our example it is</p> $\mathbf{f}_S = \begin{bmatrix} k_1 + k_2 & -k_2 \\ -k_2 & k_2 + k_3 \end{bmatrix} \mathbf{x} = \mathbf{K} \mathbf{x}$ <p>introducing the stiffness matrix \mathbf{K}. The stiffness matrix \mathbf{K} has a number of rows equal to the number of elastic forces, i.e., one force for each <i>DOF</i> and a number of columns equal to the number of the <i>DOF</i>. The stiffness matrix \mathbf{K} is hence a <i>square matrix</i> $\mathbf{K}_{\text{ndof} \times \text{ndof}}$</p>	Generalized SDOF's
	Giacomo Boffi
	Introductory Remarks
	An Example
	The Equation of Motion
	Matrices are Linear Operators
	Properties of Structural Matrices
	An example
	The Homogeneous Problem
	Modal Analysis
Examples	

$f_I = M \ddot{x}$	Generalized SDOF's
<p>Analogously, introducing the mass matrix M that, for our example, is</p> $M = \begin{bmatrix} m_1 & 0 \\ 0 & m_2 \end{bmatrix}$ <p>we can write</p> $f_I = M \ddot{x}.$ <p>Also the mass matrix M is a square matrix, with number of rows and columns equal to the number of <i>DOF</i>s.</p>	Giacomo Boffi
	Introductory Remarks
	An Example The Equation of Motion
	Matrices are Linear Operators
	Properties of Structural Matrices
	An example
	The Homogeneous Problem
	Modal Analysis
	Examples

Matrix Equation	Generalized SDOF's
<p>Finally it is possible to write the equation of motion in matrix format:</p> $M \ddot{x} + K x = p(t).$ <p>Of course, we can consider the damping forces too, taking into account the velocity vector \dot{x}, introducing a <i>damping matrix</i> C and writing</p> $M \ddot{x} + C \dot{x} + K x = p(t),$ <p>however it is now more productive to keep our attention on undamped systems.</p>	Giacomo Boffi
	Introductory Remarks
	An Example The Equation of Motion
	Matrices are Linear Operators
	Properties of Structural Matrices
	An example
	The Homogeneous Problem
	Modal Analysis
	Examples

Properties of K	Generalized SDOF's
<ul style="list-style-type: none"> ▶ K is symmetrical, because the elastic force that acts on mass i due to an unit displacement of mass j, $f_{S,i} = k_{ij}$ is equal to the force on mass j due to unit displacement of mass i, $f_{S,j} = k_{ji}$ in virtue of <i>Betti's theorem</i>. ▶ The strain energy V for a discrete system can be written $V = \frac{1}{2} \mathbf{x}^T \mathbf{f}_S = \frac{1}{2} \mathbf{x}^T \mathbf{K} \mathbf{x},$ <p>because the strain energy is positive it follows that K is a positive definite matrix.</p>	Giacomo Boffi
	Introductory Remarks
	An Example The Equation of Motion
	Matrices are Linear Operators
	Properties of Structural Matrices
	An example
	The Homogeneous Problem
	Modal Analysis
	Examples

Properties of M

Restricting our discussion to systems whose degrees of freedom are the displacements of a set of discrete masses, we have that the mass matrix is a diagonal matrix, with all its diagonal elements greater than zero. Such a matrix is symmetrical and definite positive, as well as the stiffness matrix is symmetrical and definite positive.

En passant, take note that the kinetic energy for a discrete system is

$$T = \frac{1}{2} \dot{\mathbf{x}}^T \mathbf{M} \dot{\mathbf{x}}.$$

Generalized SDOF's

Giacomo Boffi

Introductory Remarks

An Example
The Equation of Motion
Matrices are Linear Operators

Properties of Structural Matrices

An example

The Homogeneous Problem

Modal Analysis

Examples

Generalisation of previous results

The findings in the previous two slides can be generalised to the *structural matrices* of generic structural systems, with one exception.

For a general structural system, M could be *semi-definite* positive, that is for some particular displacement vector the kinetic energy could be zero.

Generalized SDOF's

Giacomo Boffi

Introductory Remarks

An Example
The Equation of Motion
Matrices are Linear Operators

Properties of Structural Matrices

An example

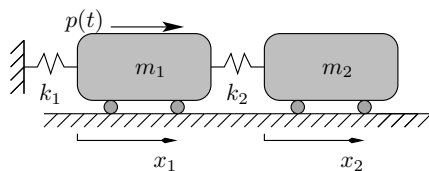
The Homogeneous Problem

Modal Analysis

Examples

The problem

Graphical statement of the problem



$$k_1 = 2k, \quad k_2 = k; \quad m_1 = 2m, \quad m_2 = m;$$
$$p(t) = p_0 \sin \omega t.$$

The equations of motion

$$m_1 \ddot{x}_1 + k_1 x_1 + k_2 (x_1 - x_2) = p_0 \sin \omega t,$$
$$m_2 \ddot{x}_2 + k_2 (x_2 - x_1) = 0.$$

... but we prefer the matrix notation ...

Generalized SDOF's

Giacomo Boffi

Introductory Remarks

An Example
The Equation of Motion
Matrices are Linear Operators
Properties of Structural Matrices

An example

The Homogeneous Problem

Modal Analysis

Examples

The steady state solution

because using the matrix notation we can follow the same steps we used to find the steady-state response of a *SDOF* system. First, the equation of motion

$$m \begin{bmatrix} 2 & 0 \\ 0 & 1 \end{bmatrix} \ddot{\mathbf{x}} + k \begin{bmatrix} 3 & -1 \\ -1 & 1 \end{bmatrix} \mathbf{x} = p_0 \begin{Bmatrix} 1 \\ 0 \end{Bmatrix} \sin \omega t$$

substituting $\mathbf{x}(t) = \boldsymbol{\xi} \sin \omega t$ and simplifying $\sin \omega t$, dividing by k , with $\omega_0^2 = k/m$, $\beta^2 = \omega^2/\omega_0^2$ and $\Delta_{st} = p_0/k$ the above equation can be written

$$\left(\begin{bmatrix} 3 & -1 \\ -1 & 1 \end{bmatrix} - \beta^2 \begin{bmatrix} 2 & 0 \\ 0 & 1 \end{bmatrix} \right) \boldsymbol{\xi} = \begin{bmatrix} 3 - 2\beta^2 & -1 \\ -1 & 1 - \beta^2 \end{bmatrix} \boldsymbol{\xi} = \Delta_{st} \begin{Bmatrix} 1 \\ 0 \end{Bmatrix}$$

solving for $\boldsymbol{\xi}/\Delta_{st}$ gives

$$\frac{\boldsymbol{\xi}}{\Delta_{st}} = \frac{\begin{bmatrix} 1 - \beta^2 & 1 \\ 1 & 3 - 2\beta^2 \end{bmatrix} \begin{Bmatrix} 1 \\ 0 \end{Bmatrix}}{(\beta^2 - \frac{1}{2})(\beta^2 - 2)} = \frac{\begin{Bmatrix} 1 - \beta^2 \\ 1 \end{Bmatrix}}{(\beta^2 - \frac{1}{2})(\beta^2 - 2)}$$

Generalized SDOF's

Giacomo Boffi

Introductory Remarks

An Example
The Equation of Motion
Matrices are Linear Operators
Properties of Structural Matrices

An example

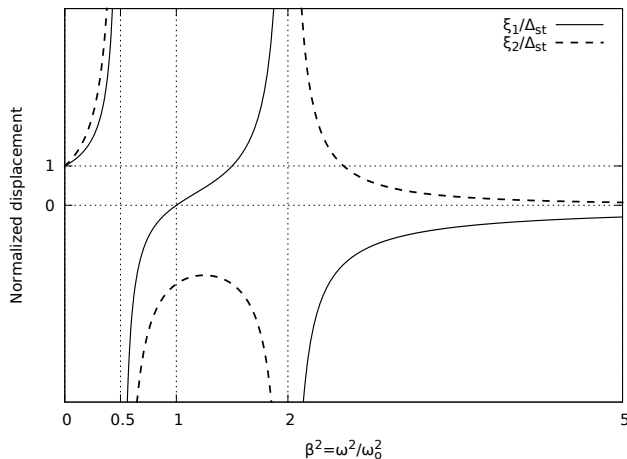
The Homogeneous Problem

Modal Analysis

Examples

The solution, graphically

steady-state response for a 2 dof system, harmonic load



Generalized SDOF's

Giacomo Boffi

Introductory Remarks

An Example
The Equation of Motion
Matrices are Linear Operators
Properties of Structural Matrices

An example

The Homogeneous Problem

Modal Analysis

Examples

Homogeneous equation of motion

To understand the behaviour of a *MDOF* system, we start writing the homogeneous equation of motion,

$$\mathbf{M} \ddot{\mathbf{x}} + \mathbf{K} \mathbf{x} = \mathbf{0}.$$

The solution, in analogy with the *SDOF* case, can be written in terms of a harmonic function of unknown frequency and, using the concept of separation of variables, of a constant vector, the so called *shape vector* $\boldsymbol{\psi}$:

$$\mathbf{x}(t) = \boldsymbol{\psi}(A \sin \omega t + B \cos \omega t).$$

Substituting in the equation of motion, we have

$$(\mathbf{K} - \omega^2 \mathbf{M}) \boldsymbol{\psi}(A \sin \omega t + B \cos \omega t) = \mathbf{0}$$

Generalized SDOF's

Giacomo Boffi

Introductory Remarks

The Homogeneous Problem

The Homogeneous Equation of Motion

Eigenvalues and Eigenvectors
Eigenvectors are Orthogonal

Modal Analysis

Examples

Eigenvalues

The previous equation must hold for every value of t , so it can be simplified removing the time dependency:

$$(\mathbf{K} - \omega^2 \mathbf{M}) \boldsymbol{\psi} = \mathbf{0}.$$

This is a homogeneous linear equation, with unknowns ψ_i and the coefficients that depends on the parameter ω^2 .

Speaking of homogeneous systems, we know that there is always a trivial solution, $\boldsymbol{\psi} = \mathbf{0}$, and that different non-zero solutions are available when the determinant of the matrix of coefficients is equal to zero,

$$\det(\mathbf{K} - \omega^2 \mathbf{M}) = 0$$

The *eigenvalues* of the *MDOF* system are the values of ω^2 for which the above equation (the *equation of frequencies*) is verified.

Generalized SDOF's

Giacomo Boffi

Introductory Remarks

The Homogeneous Problem

The Homogeneous Equation of Motion

Eigenvalues and Eigenvectors

Eigenvectors are Orthogonal

Modal Analysis

Examples

Eigenvectors

For a system with N degrees of freedom the expansion of $\det(\mathbf{K} - \omega^2 \mathbf{M})$ is an algebraic polynomial of degree N in ω^2 , whose roots, ω_i^2 , $i = 1, \dots, N$ are all real and greater than zero if both \mathbf{K} and \mathbf{M} are positive definite matrices, condition that is always satisfied by stable structural systems.

Substituting one of the N roots ω_i^2 in the characteristic equation,

$$(\mathbf{K} - \omega_i^2 \mathbf{M}) \boldsymbol{\psi}_i = \mathbf{0}$$

the resulting system of $N - 1$ linearly independent equations can be solved (except for a scale factor) for $\boldsymbol{\psi}_i$, the eigenvector corresponding to the eigenvalue ω_i^2 .

A common choice for the normalisation of the eigenvectors is *normalisation with respect to the mass matrix*, $\boldsymbol{\psi}_i^T \mathbf{M} \boldsymbol{\psi}_i = 1$

Generalized SDOF's

Giacomo Boffi

Introductory Remarks

The Homogeneous Problem

The Homogeneous Equation of Motion

Eigenvalues and Eigenvectors

Eigenvectors are Orthogonal

Modal Analysis

Examples

Initial Conditions

The most general expression (*the general integral*) for the displacement of a homogeneous system is

$$\mathbf{x}(t) = \sum_{i=1}^N \boldsymbol{\psi}_i (A_i \sin \omega_i t + B_i \cos \omega_i t).$$

In the general integral there are $2N$ unknown *constants of integration*, that must be determined in terms of the initial conditions.

Generalized SDOF's

Giacomo Boffi

Introductory Remarks

The Homogeneous Problem

The Homogeneous Equation of Motion

Eigenvalues and Eigenvectors

Eigenvectors are Orthogonal

Modal Analysis

Examples

Initial Conditions	
<p>Usually the initial conditions are expressed in terms of initial displacements and initial velocities x_0 and \dot{x}_0, so we start deriving the expression of displacement with respect to time to obtain</p> $\dot{x}(t) = \sum_{i=1}^N \psi_i \omega_i (A_i \cos \omega_i t - B_i \sin \omega_i t)$ <p>and evaluating the displacement and velocity for $t = 0$ it is</p> $x(0) = \sum_{i=1}^N \psi_i B_i = x_0, \quad \dot{x}(0) = \sum_{i=1}^N \psi_i \omega_i A_i = \dot{x}_0.$ <p>The above equations are vector equations, each one corresponding to a system of N equations, so we can compute the $2N$ constants of integration solving the $2N$ equations</p> $\sum_{i=1}^N \psi_{ji} B_i = x_{0,j}, \quad \sum_{i=1}^N \psi_{ji} \omega_i A_i = \dot{x}_{0,j}, \quad j = 1, \dots, N.$	<p>Generalized SDOF's</p> <p>Giacomo Boffi</p> <p>Introductory Remarks</p> <p>The Homogeneous Problem</p> <p>The Homogeneous Equation of Motion</p> <p>Eigenvalues and Eigenvectors</p> <p>Eigenvectors are Orthogonal</p> <p>Modal Analysis</p> <p>Examples</p>

Orthogonality - 1	
<p>Take into consideration two distinct eigenvalues, ω_r^2 and ω_s^2, and write the characteristic equation for each eigenvalue:</p> $K \psi_r = \omega_r^2 M \psi_r$ $K \psi_s = \omega_s^2 M \psi_s$ <p>premultiply each equation member by the transpose of the <i>other</i> eigenvector</p> $\psi_s^T K \psi_r = \omega_r^2 \psi_s^T M \psi_r$ $\psi_r^T K \psi_s = \omega_s^2 \psi_r^T M \psi_s$	<p>Generalized SDOF's</p> <p>Giacomo Boffi</p> <p>Introductory Remarks</p> <p>The Homogeneous Problem</p> <p>The Homogeneous Equation of Motion</p> <p>Eigenvalues and Eigenvectors</p> <p>Eigenvectors are Orthogonal</p> <p>Modal Analysis</p> <p>Examples</p>

Orthogonality - 2	
<p>The term $\psi_s^T K \psi_r$ is a scalar, hence</p> $\psi_s^T K \psi_r = (\psi_s^T K \psi_r)^T = \psi_r^T K^T \psi_s$ <p>but K is symmetrical, $K^T = K$ and we have</p> $\psi_s^T K \psi_r = \psi_r^T K \psi_s.$ <p>By a similar derivation</p> $\psi_s^T M \psi_r = \psi_r^T M \psi_s.$	<p>Generalized SDOF's</p> <p>Giacomo Boffi</p> <p>Introductory Remarks</p> <p>The Homogeneous Problem</p> <p>The Homogeneous Equation of Motion</p> <p>Eigenvalues and Eigenvectors</p> <p>Eigenvectors are Orthogonal</p> <p>Modal Analysis</p> <p>Examples</p>

Orthogonality - 3

Substituting our last identities in the previous equations, we have

$$\psi_r^T \mathbf{K} \psi_s = \omega_r^2 \psi_r^T \mathbf{M} \psi_s$$

$$\psi_r^T \mathbf{K} \psi_s = \omega_s^2 \psi_r^T \mathbf{M} \psi_s$$

subtracting member by member we find that

$$(\omega_r^2 - \omega_s^2) \psi_r^T \mathbf{M} \psi_s = 0$$

We started with the hypothesis that $\omega_r^2 \neq \omega_s^2$, so for every $r \neq s$ we have that the corresponding eigenvectors are *orthogonal with respect to the mass matrix*

$$\psi_r^T \mathbf{M} \psi_s = 0, \quad \text{for } r \neq s.$$

Generalized SDOF's

Giacomo Boffi

Introductory Remarks

The Homogeneous Problem

The Homogeneous Equation of Motion

Eigenvalues and Eigenvectors

Eigenvectors are Orthogonal

Modal Analysis

Examples

Orthogonality - 4

The eigenvectors are orthogonal also with respect to the stiffness matrix:

$$\psi_s^T \mathbf{K} \psi_r = \omega_r^2 \psi_s^T \mathbf{M} \psi_r = 0, \quad \text{for } r \neq s.$$

By definition

$$M_i = \psi_i^T \mathbf{M} \psi_i$$

and

$$\psi_i^T \mathbf{K} \psi_i = \omega_i^2 M_i.$$

Generalized SDOF's

Giacomo Boffi

Introductory Remarks

The Homogeneous Problem

The Homogeneous Equation of Motion

Eigenvalues and Eigenvectors

Eigenvectors are Orthogonal

Modal Analysis

Examples

Eigenvectors are a base

The eigenvectors are linearly independent, so for every vector \mathbf{x} we can write

$$\mathbf{x} = \sum_{j=1}^N \psi_j q_j.$$

The coefficients are readily given by premultiplication of \mathbf{x} by $\psi_i^T \mathbf{M}$, because

$$\psi_i^T \mathbf{M} \mathbf{x} = \sum_{j=1}^N \psi_i^T \mathbf{M} \psi_j q_j = \psi_i^T \mathbf{M} \psi_i q_i = M_i q_i$$

in virtue of the orthogonality of the eigenvectors with respect to the mass matrix, and the above relationship gives

$$q_j = \frac{\psi_j^T \mathbf{M} \mathbf{x}}{M_j}.$$

Generalized SDOF's

Giacomo Boffi

Introductory Remarks

The Homogeneous Problem

Modal Analysis

Eigenvectors are a base

EoM in Modal Coordinates

Initial Conditions

Examples

Eigenvectors are a base

Generalising our results for the displacement vector to the acceleration vector, we can write

$$\mathbf{x}(t) = \sum_{j=1}^N \psi_j q_j(t), \quad \ddot{\mathbf{x}}(t) = \sum_{j=1}^N \psi_j \ddot{q}_j(t),$$

$$x_i(t) = \sum_{j=1}^N \Psi_{ij} q_j(t), \quad \ddot{x}_i(t) = \sum_{j=1}^N \psi_{ij} \ddot{q}_j(t).$$

Introducing $\mathbf{q}(t)$, the vector of *modal coordinates* and Ψ , the *eigenvector matrix*, whose columns are the eigenvectors,

$$\mathbf{x}(t) = \Psi \mathbf{q}(t), \quad \ddot{\mathbf{x}}(t) = \Psi \ddot{\mathbf{q}}(t).$$

Generalized SDOF's

Giacomo Boffi

Introductory Remarks

The Homogeneous Problem

Modal Analysis

Eigenvectors are a base

EoM in Modal Coordinates

Initial Conditions

Examples

EoM in Modal Coordinates...

Substituting the last two equations in the equation of motion,

$$\mathbf{M} \Psi \ddot{\mathbf{q}} + \mathbf{K} \Psi \mathbf{q} = \mathbf{p}(t)$$

premultiplying by Ψ^T

$$\Psi^T \mathbf{M} \Psi \ddot{\mathbf{q}} + \Psi^T \mathbf{K} \Psi \mathbf{q} = \Psi^T \mathbf{p}(t)$$

introducing the so called *starred* matrices we can finally write

$$\mathbf{M}^* \ddot{\mathbf{q}} + \mathbf{K}^* \mathbf{q} = \mathbf{p}^*(t)$$

where $\mathbf{p}^*(t) = \Psi^T \mathbf{p}(t)$, and the scalar equation are

$$p_i^* = \sum m_{ij}^* \ddot{q}_j + \sum k_{ij}^* q_j.$$

Generalized SDOF's

Giacomo Boffi

Introductory Remarks

The Homogeneous Problem

Modal Analysis

Eigenvectors are a base

EoM in Modal Coordinates

Initial Conditions

Examples

... are N independent equations!

We must examine the structure of the starred symbols. The generic element, with indexes i and j , of the *starred* matrices can be expressed in terms of single eigenvectors,

$$m_{ij}^* = \psi_i^T \mathbf{M} \psi_j = \delta_{ij} M_i,$$

$$k_{ij}^* = \psi_i^T \mathbf{K} \psi_j = \omega_i^2 \delta_{ij} M_i.$$

where δ_{ij} is the *Kroneker symbol*,

$$\delta_{ij} = \begin{cases} 1 & i = j \\ 0 & i \neq j \end{cases}$$

Substituting in the equation of motion, with $p_i^* = \psi_i^T \mathbf{p}(t)$ we have **a set of uncoupled equations**

$$M_i \ddot{q}_i + \omega_i^2 M_i q_i = p_i^*(t), \quad i = 1, \dots, N$$

Generalized SDOF's

Giacomo Boffi

Introductory Remarks

The Homogeneous Problem

Modal Analysis

Eigenvectors are a base

EoM in Modal Coordinates

Initial Conditions

Examples

Initial Conditions Revisited

The initial displacements can be written in modal coordinates,

$$\mathbf{x}_0 = \Psi \mathbf{q}_0$$

and premultiplying both members by $\Psi^T M$ we have the following relationship:

$$\Psi^T M \mathbf{x}_0 = \Psi^T M \Psi \mathbf{q}_0 = M^* \mathbf{q}_0.$$

Premultiplying by the inverse of M^* and taking into account that M^* is diagonal,

$$\mathbf{q}_0 = (M^*)^{-1} \Psi^T M \mathbf{x}_0 \Rightarrow q_{i0} = \frac{\psi_i^T M \mathbf{x}_0}{M_i}$$

and, analogously,

$$\dot{q}_{i0} = \frac{\psi_i^T M \dot{\mathbf{x}}_0}{M_i}$$

Generalized SDOF's

Giacomo Boffi

Introductory Remarks

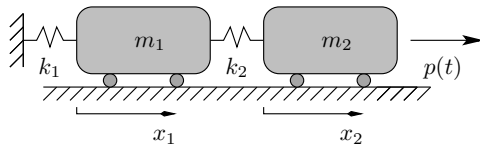
The Homogeneous Problem

Modal Analysis
Eigenvectors are a base
EoM in Modal Coordinates

Initial Conditions

Examples

2 DOF System



$$k_1 = k, \quad k_2 = 2k; \quad m_1 = 2m, \quad m_2 = m; \\ p(t) = p_0 \sin \omega t.$$

$$\mathbf{x} = \begin{Bmatrix} x_1 \\ x_2 \end{Bmatrix}, \quad \mathbf{p}(t) = \begin{Bmatrix} 0 \\ p_0 \end{Bmatrix} \sin \omega t,$$

$$\mathbf{M} = m \begin{bmatrix} 2 & 0 \\ 0 & 1 \end{bmatrix}, \quad \mathbf{K} = k \begin{bmatrix} 3 & -2 \\ -2 & 2 \end{bmatrix}.$$

Generalized SDOF's

Giacomo Boffi

Introductory Remarks

The Homogeneous Problem

Modal Analysis

Examples

2 DOF System

Equation of frequencies

The equation of frequencies is

$$\|\mathbf{K} - \omega^2 \mathbf{M}\| = \begin{vmatrix} 3k - 2\omega^2 m & -2k \\ -2k & 2k - \omega^2 m \end{vmatrix} = 0.$$

Developing the determinant

$$(2m^2)\omega^4 - (7mk)\omega^2 + (2k^2)\omega^0 = 0$$

Solving the algebraic equation in ω^2

$$\omega_1^2 = \frac{k}{m} \frac{7 - \sqrt{33}}{4} \quad \omega_2^2 = \frac{k}{m} \frac{7 + \sqrt{33}}{4}$$

$$\omega_1^2 = 0.31386 \frac{k}{m} \quad \omega_2^2 = 3.18614 \frac{k}{m}$$

Generalized SDOF's

Giacomo Boffi

Introductory Remarks

The Homogeneous Problem

Modal Analysis

Examples

2 DOF System

Eigenvectors

Substituting ω_1^2 for ω^2 in the first of the characteristic equations gives the ratio between the components of the first eigenvector,

$$k(3 - 2 \times 0.31386)\psi_{11} - 2k\psi_{21} = 0$$

while substituting ω_2^2 gives

$$k(3 - 2 \times 3.18614)\psi_{12} - 2k\psi_{22} = 0.$$

Solving with the arbitrary assignment $\psi_{21} = \psi_{22} = 1$ gives the *unnormalized* eigenvectors,

$$\psi_1 = \begin{Bmatrix} +0.84307 \\ +1.00000 \end{Bmatrix}, \quad \psi_2 = \begin{Bmatrix} -0.59307 \\ +1.00000 \end{Bmatrix}.$$

Generalized SDOF's

Giacomo Boffi

Introductory Remarks

The Homogeneous Problem

Modal Analysis

Examples

2 DOF System

Normalization

We compute first M_1 and M_2 ,

$$\begin{aligned} M_1 &= \psi_1^T \mathbf{M} \psi_1 \\ &= \{0.84307, 1\} \begin{bmatrix} 2m & 0 \\ 0 & m \end{bmatrix} \begin{Bmatrix} 0.84307 \\ 1 \end{Bmatrix} \\ &= \{1.68614m, m\} \begin{Bmatrix} 0.84307 \\ 1 \end{Bmatrix} = 2.42153m \end{aligned}$$

$$M_2 = 1.70346m$$

the *adimensional* normalisation factors are

$$\alpha_1 = \sqrt{2.42153}, \quad \alpha_2 = \sqrt{1.70346}.$$

Applying the normalisation factors to the respective unnormalised eigenvectors and collecting them in a matrix, we have the *matrix of normalized eigenvectors*

$$\Psi = \begin{bmatrix} +0.54177 & -0.45440 \\ +0.64262 & +0.76618 \end{bmatrix}$$

Generalized SDOF's

Giacomo Boffi

Introductory Remarks

The Homogeneous Problem

Modal Analysis

Examples

2 DOF System

Modal Loadings

The modal loading is

$$\begin{aligned} \mathbf{p}^*(t) &= \Psi^T \mathbf{p}(t) \\ &= p_0 \begin{bmatrix} +0.54177 & +0.64262 \\ -0.45440 & +0.76618 \end{bmatrix} \begin{Bmatrix} 0 \\ 1 \end{Bmatrix} \sin \omega t \\ &= p_0 \begin{Bmatrix} +0.64262 \\ +0.76618 \end{Bmatrix} \sin \omega t \end{aligned}$$

Generalized SDOF's

Giacomo Boffi

Introductory Remarks

The Homogeneous Problem

Modal Analysis

Examples

2 DOF System

Modal EoM

Generalized SDOF's

Giacomo Boffi

Introductory Remarks

The Homogeneous Problem

Modal Analysis

Examples

2 DOF System

Substituting its modal expansion for x into the equation of motion and premultiplying by Ψ^T we have the uncoupled modal equation of motion

$$\begin{cases} m\ddot{q}_1 + 0.31386k q_1 = +0.64262 p_0 \sin \omega t \\ m\ddot{q}_2 + 3.18614k q_2 = +0.76618 p_0 \sin \omega t \end{cases}$$

Note that all the terms are dimensionally correct. Dividing by m both equations, we have

$$\begin{cases} \ddot{q}_1 + \omega_1^2 q_1 = +0.64262 \frac{p_0}{m} \sin \omega t \\ \ddot{q}_2 + \omega_2^2 q_2 = +0.76618 \frac{p_0}{m} \sin \omega t \end{cases}$$

Particular Integral

Generalized SDOF's

Giacomo Boffi

Introductory Remarks

The Homogeneous Problem

Modal Analysis

Examples

2 DOF System

We set

$$\xi_1 = C_1 \sin \omega t, \quad \ddot{\xi} = -\omega^2 C_1 \sin \omega t$$

and substitute in the first modal EoM:

$$C_1 (\omega_1^2 - \omega^2) \sin \omega t = \frac{p_1^*}{m} \sin \omega t$$

solving for C_1

$$C_1 = \frac{p_1^*}{m} \frac{1}{\omega_1^2 - \omega^2}$$

with $\omega_1^2 = K_1/m \Rightarrow m = K_1/\omega_1^2$:

$$C_1 = \frac{p_1^*}{K_1} \frac{\omega_1^2}{\omega_1^2 - \omega^2} = \Delta_{st}^{(1)} \frac{1}{1 - \beta_1^2} \quad \text{with } \Delta_{st}^{(1)} = \frac{p_1^*}{K_1} = 2.047 \frac{p_0}{k} \quad \text{and } \beta_1 = \frac{\omega}{\omega_1}$$

of course

$$C_2 = \Delta_{st}^{(2)} \frac{1}{1 - \beta_2^2} \quad \text{with } \Delta_{st}^{(2)} = \frac{p_2^*}{K_2} = 0.2404 \frac{p_0}{k} \quad \text{and } \beta_2 = \frac{\omega}{\omega_2}$$

Integrals

Generalized SDOF's

Giacomo Boffi

Introductory Remarks

The Homogeneous Problem

Modal Analysis

Examples

2 DOF System

The integrals, for our loading, are thus

$$\begin{cases} q_1(t) = A_1 \sin \omega_1 t + B_1 \cos \omega_1 t + \Delta_{st}^{(1)} \frac{\sin \omega t}{1 - \beta_1^2} \\ q_2(t) = A_2 \sin \omega_2 t + B_2 \cos \omega_2 t + \Delta_{st}^{(2)} \frac{\sin \omega t}{1 - \beta_2^2} \end{cases}$$

for a system initially at rest

$$\begin{cases} q_1(t) = \Delta_{st}^{(1)} \frac{1}{1 - \beta_1^2} (\sin \omega t - \beta_1 \sin \omega_1 t) \\ q_2(t) = \Delta_{st}^{(2)} \frac{1}{1 - \beta_2^2} (\sin \omega t - \beta_2 \sin \omega_2 t) \end{cases}$$

we are interested in structural degrees of freedom, too... disregarding transient

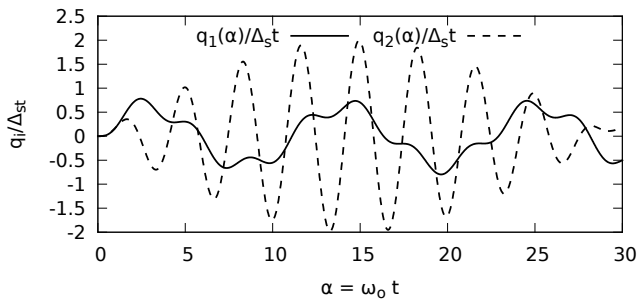
$$\begin{cases} x_1(t) = \left(\psi_{11} \frac{\Delta_{st}^{(1)}}{1 - \beta_1^2} + \psi_{12} \frac{\Delta_{st}^{(2)}}{1 - \beta_2^2} \right) \sin \omega t = \left(\frac{1.10926}{1 - \beta_1^2} - \frac{0.109271}{1 - \beta_2^2} \right) \frac{p_0}{k} \sin \omega t \\ x_2(t) = \left(\psi_{21} \frac{\Delta_{st}^{(1)}}{1 - \beta_1^2} + \psi_{22} \frac{\Delta_{st}^{(2)}}{1 - \beta_2^2} \right) \sin \omega t = \left(\frac{1.31575}{1 - \beta_1^2} + \frac{0.184245}{1 - \beta_2^2} \right) \frac{p_0}{k} \sin \omega t \end{cases}$$

The response in modal coordinates

To have a feeling of the response in modal coordinates, let's say that the frequency of the load is $\omega = 2\omega_0$.

This implies that $\beta_1 = \frac{\omega}{\omega_1} = \frac{2.0}{0.31386} = 6.37226$ and

$$\beta_2 = \frac{\omega}{\omega_2} = \frac{2.0}{3.18614} = 0.62771.$$



In the graph above, the responses are plotted against an adimensional time coordinate α with $\alpha = \omega_0 t$, while the ordinates are adimensionalised with respect to $\Delta_{st} = \frac{p_0}{k}$.

Generalized SDOF's

Giacomo Boffi

Introductory Remarks

The Homogeneous Problem

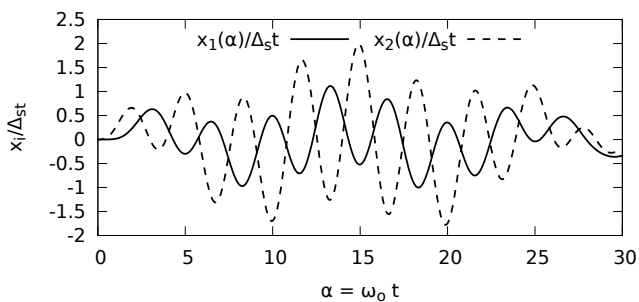
Modal Analysis

Examples

2 DOF System

The response in structural coordinates

Using the same normalisation factors, here are the response functions in terms of $x_1 = \psi_{11}q_1 + \psi_{12}q_2$ and $x_2 = \psi_{21}q_1 + \psi_{22}q_2$:



Generalized SDOF's

Giacomo Boffi

Introductory Remarks

The Homogeneous Problem

Modal Analysis

Examples

2 DOF System